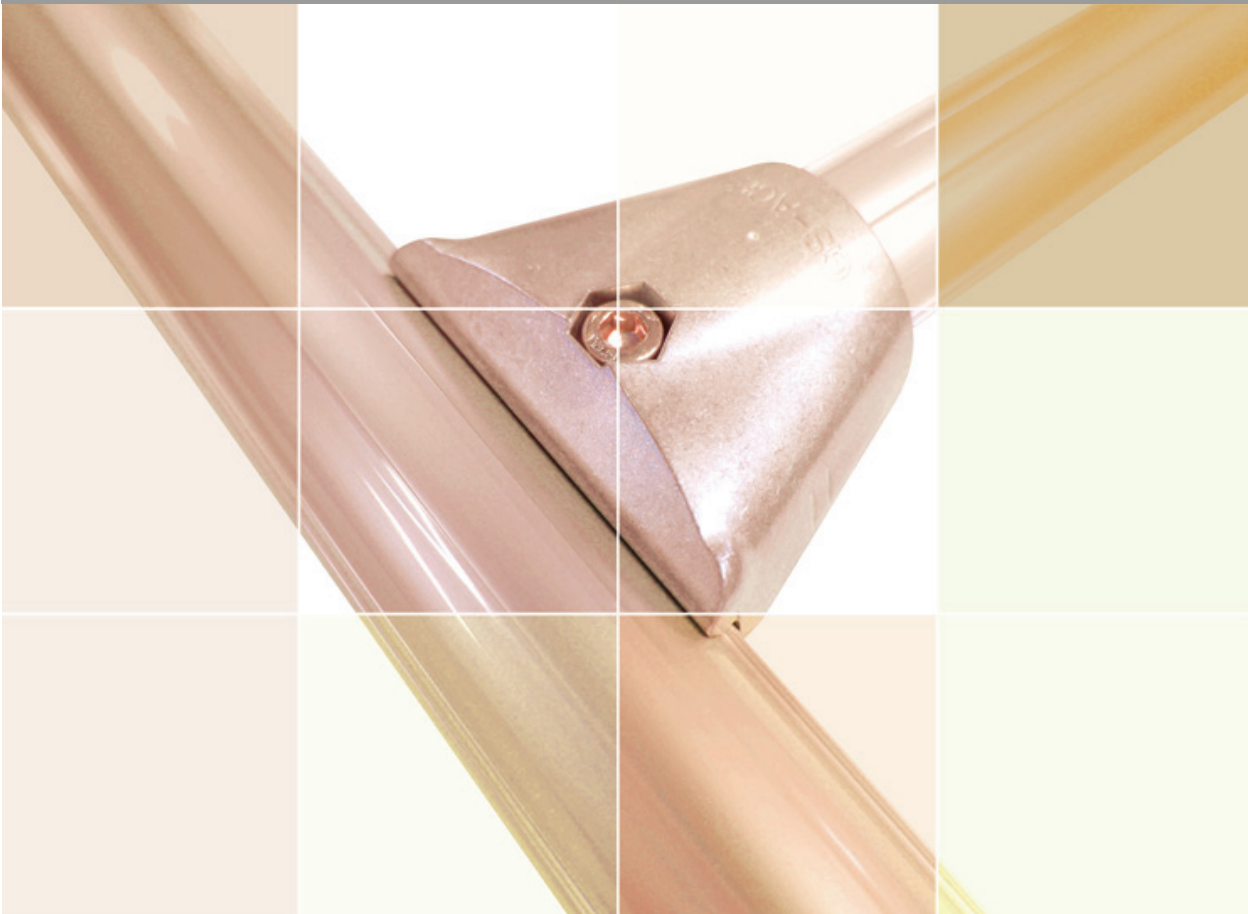
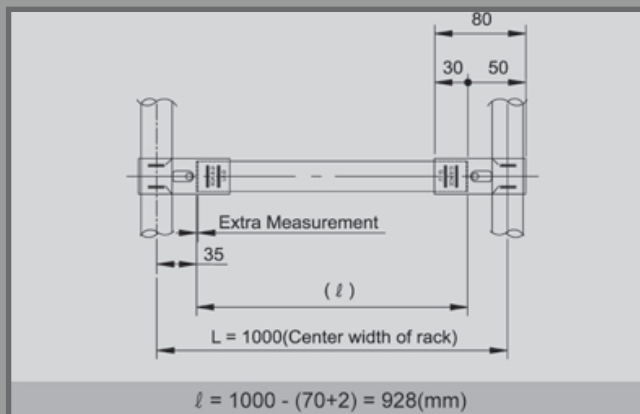


ALUMINIUM JOINTS



JOINTS



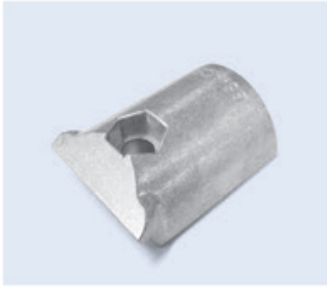
Case of $\varnothing 28 \text{ mm}$

1000 mm	Center Measurement (L)
- 70 mm	Pipe Length Inside Joint (35mm x 2)
- 2 mm	Extra Measurement (2mm - 5 mm)
928 mm	Pipe Length (l)

Unit : mm

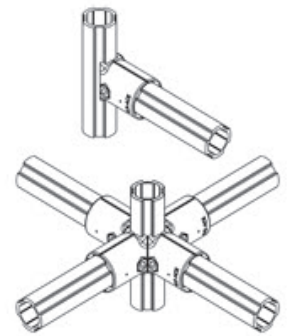
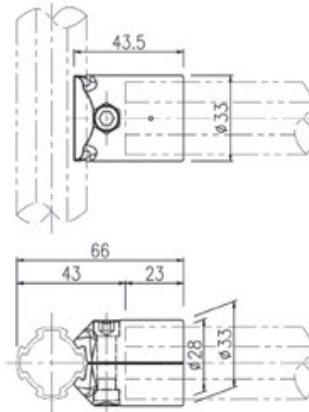
A-001

Single Tee Joint



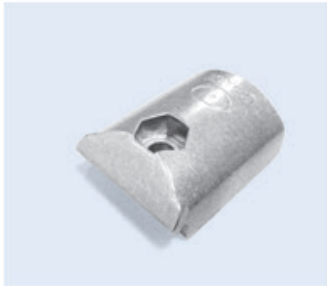
- Weight : 0.023kg
- Q'ty/Box : 200pcs

- A-001: 2pcs
- M0625/N06-55: 1set
- Weight : 0.055kg
- Q'ty/Box : 100set



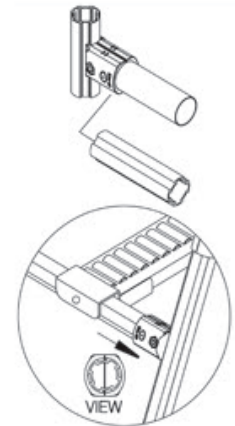
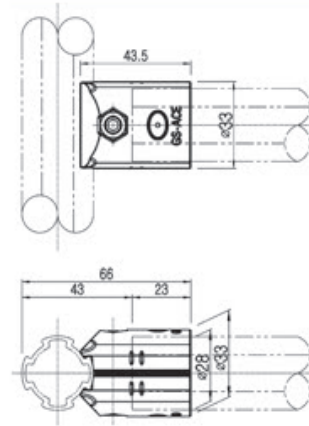
A-001C

Single Tee Joint (for round pipes)



- Weight : 0.025kg
- Q'ty/Box : 200pcs

- A-001C: 2pcs
- M0625/N06-55: 1set
- Weight : 0.060kg
- Q'ty/Box : 100set



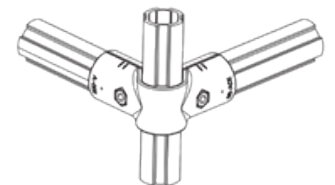
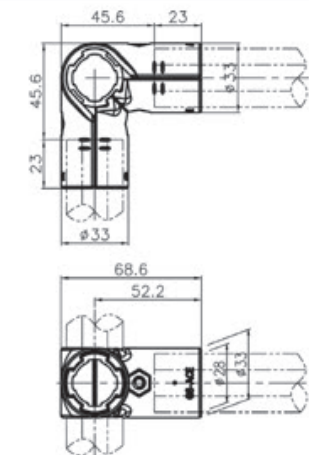
A-003

Outer Elbow Joint



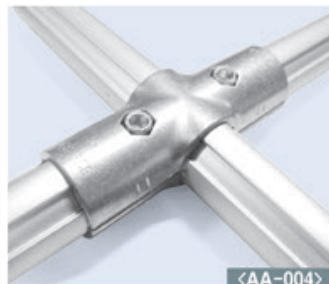
- Weight : 0.068kg
- Q'ty/Box : 80pcs

- A-003: 1pcs, A-001: 2pcs
- M0625/N06-55: 2set
- Weight : 0.123kg
- Q'ty/Box : 40set



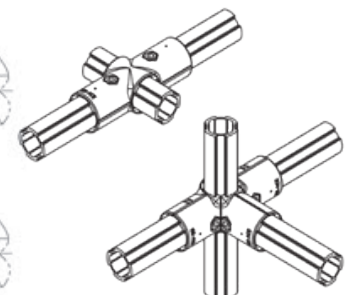
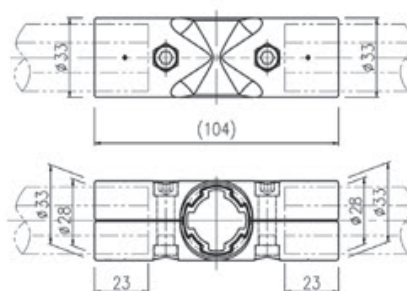
A-004

Straight Joint



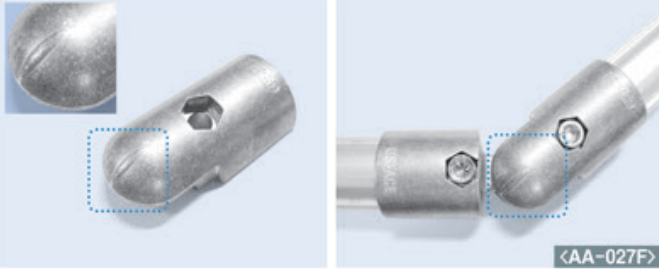
- Weight : 0.064kg
- Q'ty/Box : 80pcs

- A-004: 2pcs
- M0625/N06-55: 2set
- Weight : 0.126kg
- Q'ty/Box : 40set



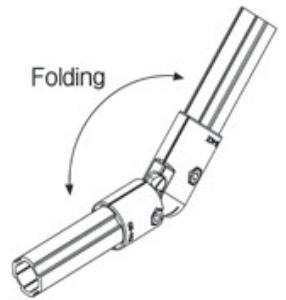
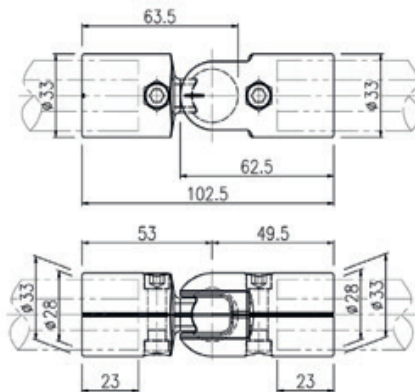
A-007B

Swivel Joint(Angle Adjustable)



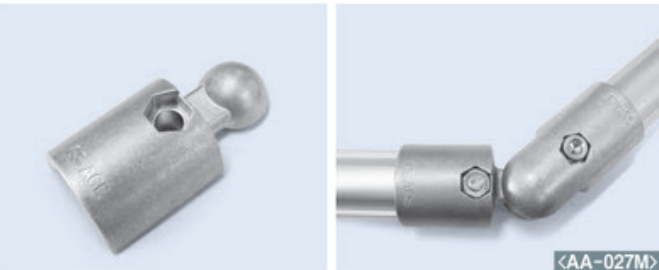
- Weight : 0.031kg
- Q'ty/Box : 200pcs

- A-007B: 2pcs, A-007C: 2pcs
- M0625/N06-55: 2set
- Weight : 0.134kg
- Q'ty/Box : 50set



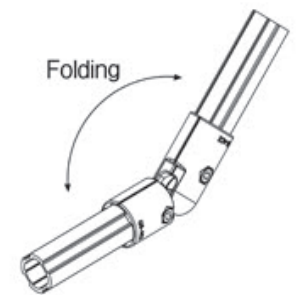
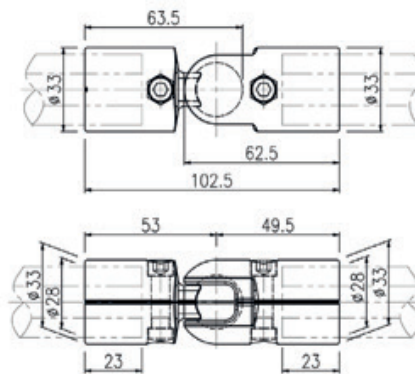
A-007C

Swivel Joint(Angle Adjustable)



- Weight : 0.027kg
- Q'ty/Box : 200pcs

- A-007C: 2pcs, A-007D: 2pcs
- M0625/N06-55: 2set
- Weight : 0.133kg
- Q'ty/Box : 50set



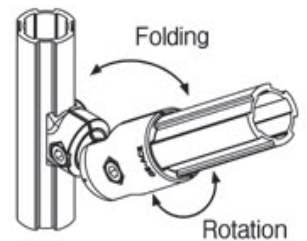
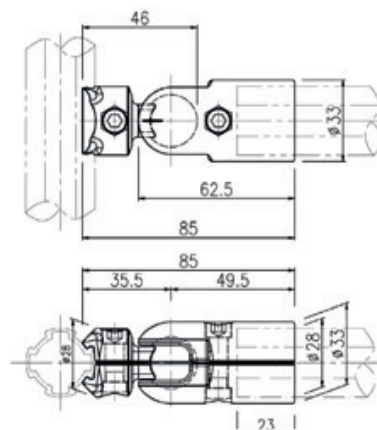
A-007D

Swivel Joint(Revolution, Angle Adjustable)



- Weight : 0.031kg
- Q'ty/Box : 200pcs

- A-007D : 2pcs B-007A : 2pcs
- M0620/N06-55 : 1set
- M0625/N06-55 : 1set
- Weight : 0.112kg/m
- Q'ty/Box : 50set



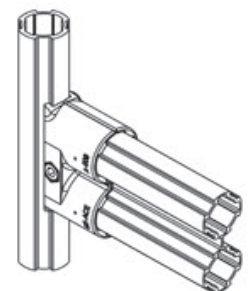
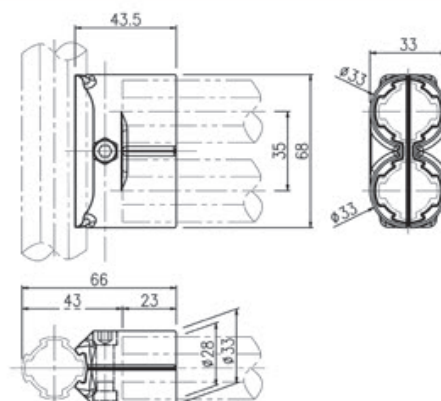
A-009

Double Tee Joint



- Weight : 0.050kg
- Q'ty/Box : 100pcs

- A-009: 2pcs
- M0625/N06-55: 1set
- Weight : 0.109kg
- Q'ty/Box : 50set



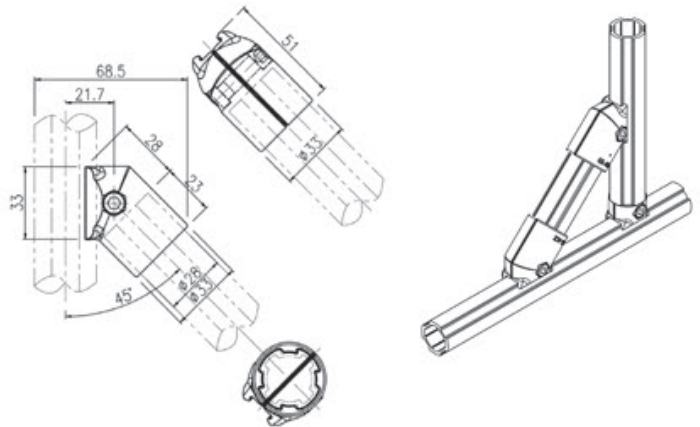
Unit : mm

A-013L, A-013R 45° Joint



- Weight : 0.023kg
- Q'ty/Box : 200pcs

- A-013L: 1pcs, A-013R: 1pcs
- M0625/N06-55: 1set
- Weight : 0.054kg
- Q'ty/Box : 100set

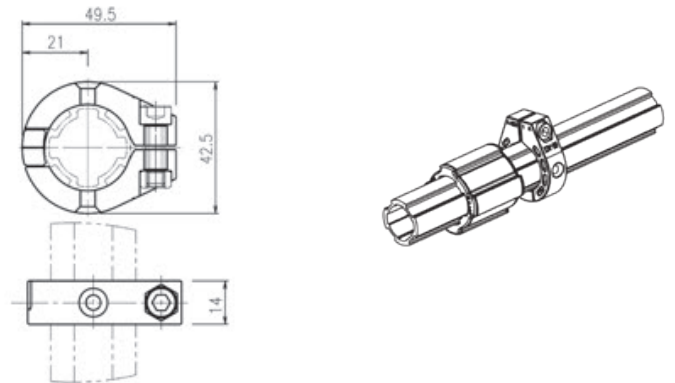


A-023 Stop Joint



- Weight : 0.017kg
- Q'ty/Box : 300pcs

- A-023: 2pcs
- M0620/N06-55: 1set
- Weight : 0.037kg
- Q'ty/Box : 150set

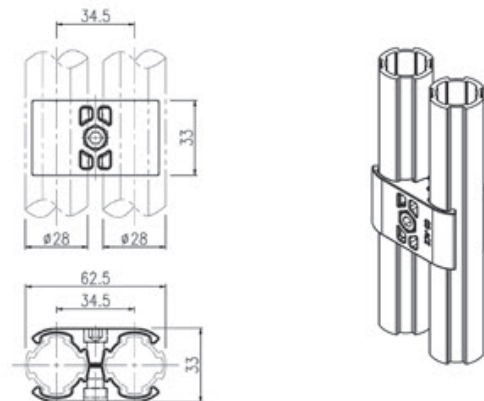


A-028 Parallel Joint



- Weight : 0.026kg
- Q'ty/Box : 150pcs

- A-028: 2pcs
- M0625/N06-55: 1set
- Weight : 0.060kg
- Q'ty/Box : 75set

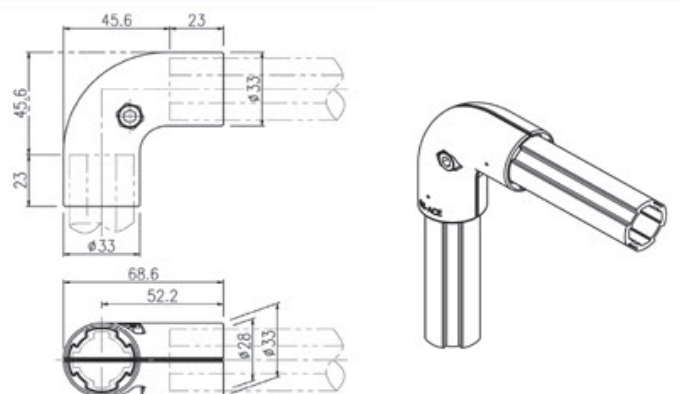


A-090 90° Elbow Joint

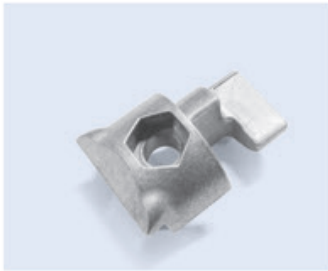


- Weight : 0.050kg
- Q'ty/Box : 80pcs

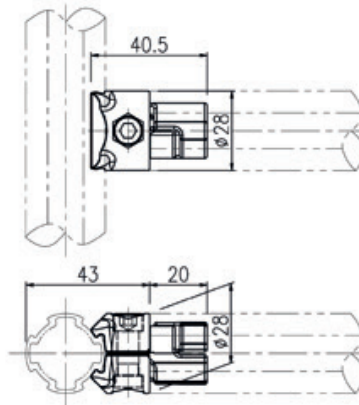
- A-090: 2pcs
- M0625/N06-55: 1set
- Weight : 0.110kg
- Q'ty/Box : 40set



B-001 Single Tee Joint



<BA-001>



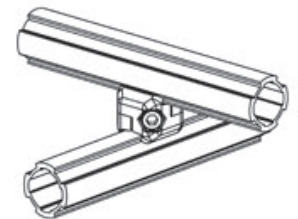
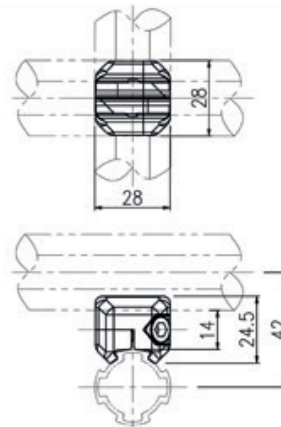
- Weight : 0.018kg
- Q'ty/Box : 300pcs

- B-001: 2pcs
- M0620/N06-55: 1set
- Weight : 0.044kg
- Q'ty/Box : 150set

B-006 90° Offset Joint



<BA-006>



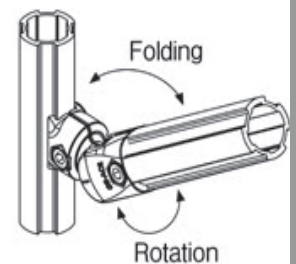
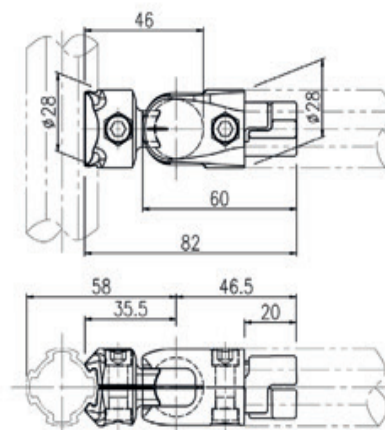
- Weight : 0.012kg
- Q'ty/Box : 400pcs

- B-006: 2pcs
- M0625/N06-55: 1set
- Weight : 0.036kg
- Q'ty/Box : 200set

B-007A Swivel Joint (Revolution, Angle Adjustable)



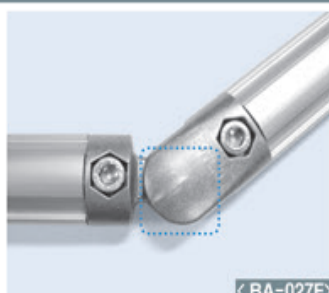
<BA-007F>



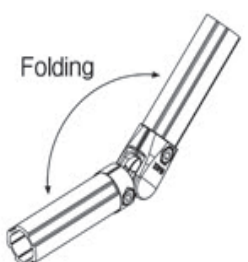
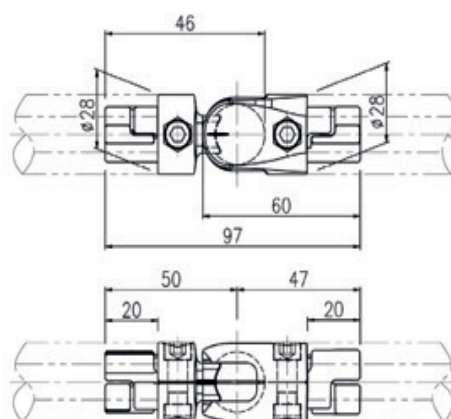
- Weight : 0.017kg
- Q'ty/Box : 400pcs

- B-007A: 2pcs, B-007B: 2pcs
- M0620/N06-55: 2set
- Weight : 0.099kg
- Q'ty/Box : 80set

B-007B Swivel Joint (Angle Adjustable)



<BA-027F>



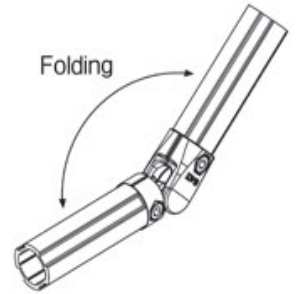
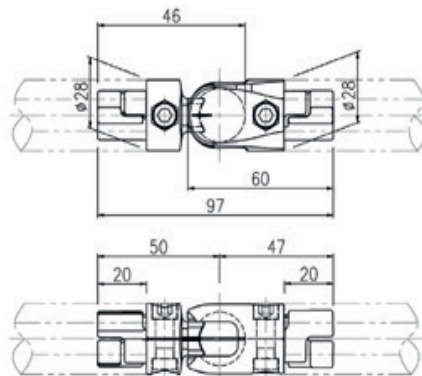
- Weight : 0.025kg
- Q'ty/Box : 250pcs

- B-007B: 2pcs, B-007C: 2pcs
- M0620/N06-55: 2set
- Weight : 0.112kg
- Q'ty/Box : 80set

Unit : mm

B-007C

Swivel Joint(Angle Adjustable)



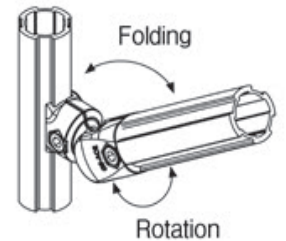
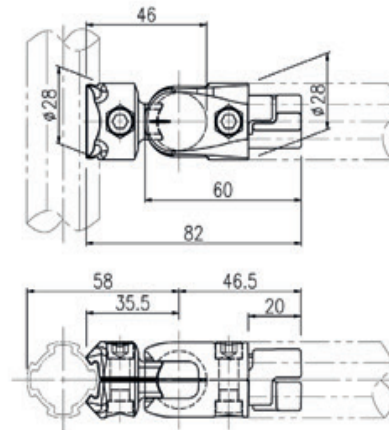
<BA-027M>

- Weight : 0.023kg
- Q'ty/Box : 250pcs

- B-007C: 2pcs, B-007D: 2pcs
- M0620/N06-55: 2set
- Weight : 0.111kg
- Q'ty/Box : 80set

B-007D

Swivel Joint(Revolution, Angle Adjustable)



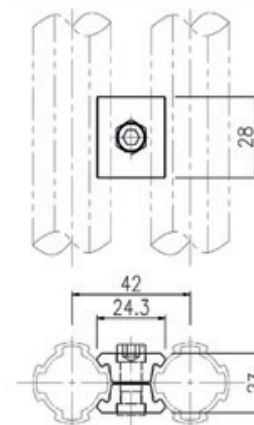
<BA-007R>

- Weight : 0.025kg
- Q'ty/Box : 250pcs

- B-007A: 2pcs, B-007D: 2pcs
- M0620/N06-55: 2set
- Weight : 0.098kg
- Q'ty/Box : 80set

B-008

Parallel Joint



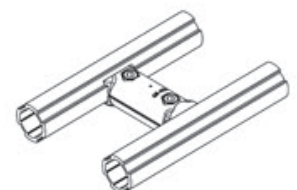
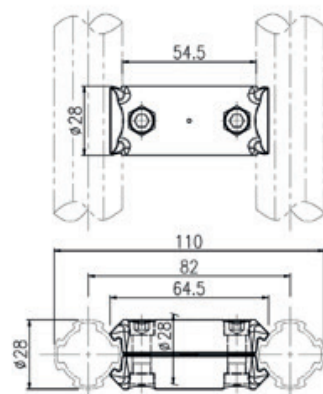
<BA-008>

- Weight : 0.013kg
- Q'ty/Box : 400pcs

- B-008: 2pcs
- M0620/N06-55: 1set
- Weight : 0.032kg
- Q'ty/Box : 200set

B-011

Parallel Joint



<BA-011>

- Weight : 0.030kg
- Q'ty/Box : 200pcs

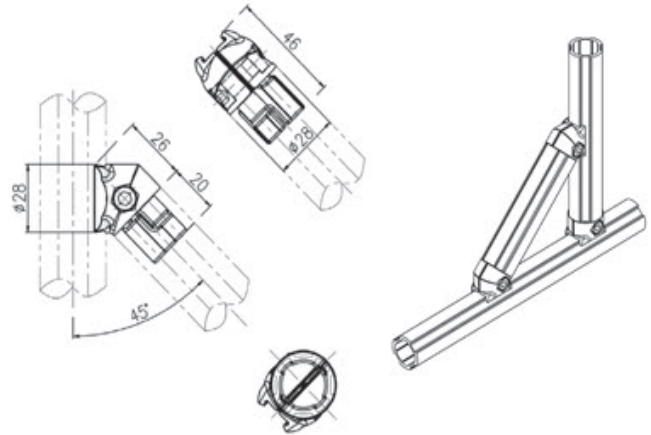
- B-011: 2pcs
- M0620/N06-55: 2set
- Weight : 0.075kg
- Q'ty/Box : 100set

B-013L, B-013R 45° Joint



- Weight : 0.018kg
- Q'ty/Box : 300pcs

- B-013L: 1pcs, B-013R: 1pcs
- M0620/N06-55: 1set
- Weight : 0.043kg
- Q'ty/Box : 150set

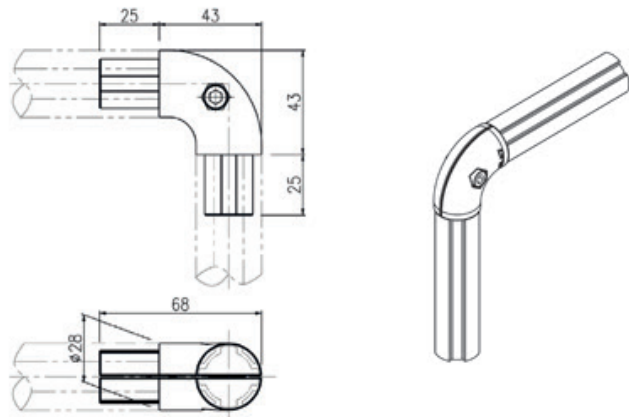


B-090 90° Elbow Joint



- Weight : 0.039kg
- Q'ty/Box : 120pcs

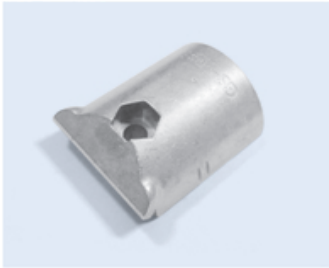
- B-090: 2pcs
- M0620/N06-55: 1set
- Weight : 0.086kg
- Q'ty/Box : 60set



Unit : mm

A-401

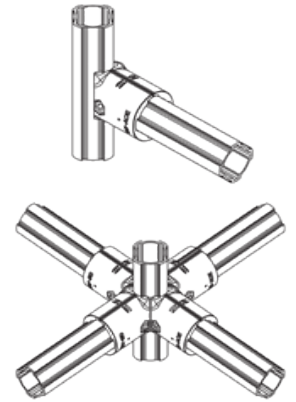
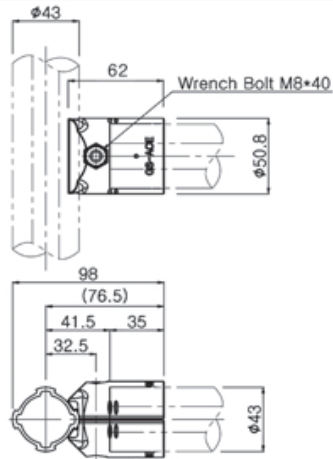
Single Tee Joint



AA-401

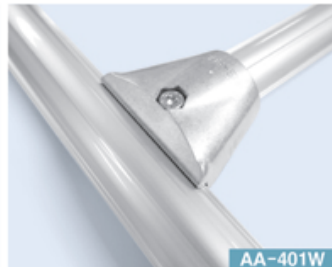
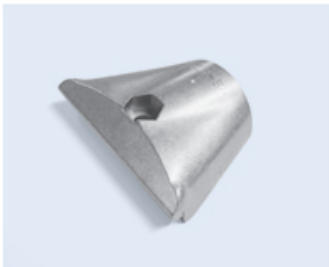
- Weight : 0.077kg
- Q'ty/Box : 60EA

- A-401 : 2pcs
- M0840/N08 : 1set
- Weight : 0.178kg
- Q'ty/Box : 35set



A-401W

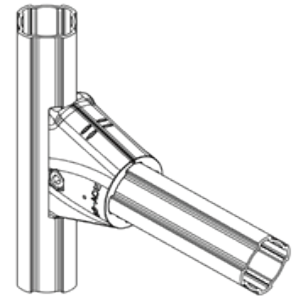
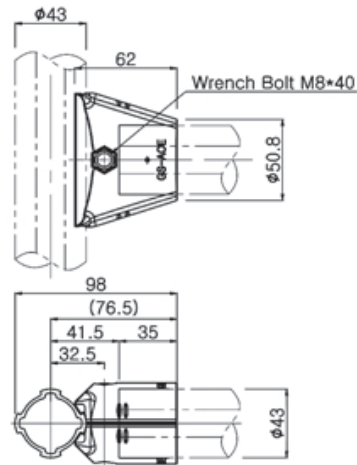
Single Tee Joint (Heavy Duty)



AA-401W

- Weight : 0.123kg
- Q'ty/Box : 40EA

- A-401W : 2pcs
- M0840/N08 : 1set
- Weight : 0.270kg
- Q'ty/Box : 20set



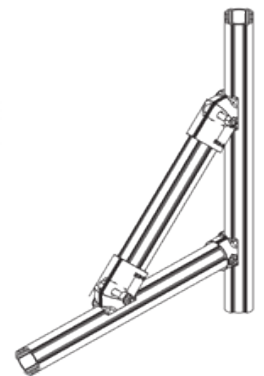
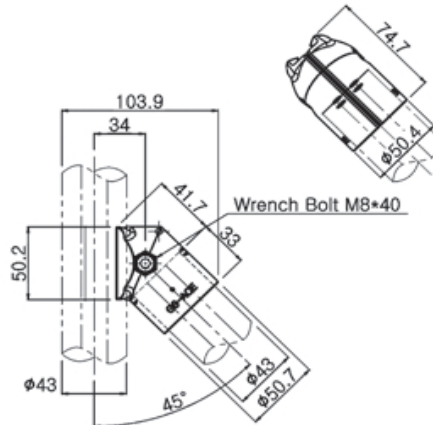
A-413L, A-413R 45° Joint



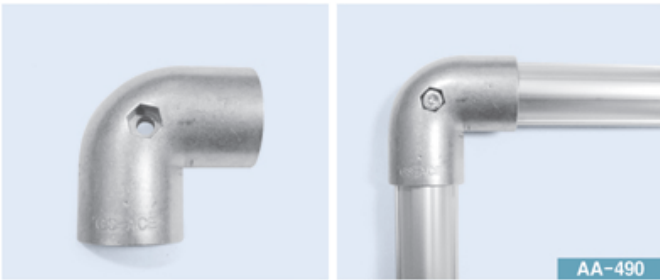
AA-413

- Weight : 0.082kg
- Q'ty/Box : 50EA

- A-413L : 1pcs, A-413R : 1pcs
- M0840/N08 : 1set
- Weight : 0.188kg
- Q'ty/Box : 25set

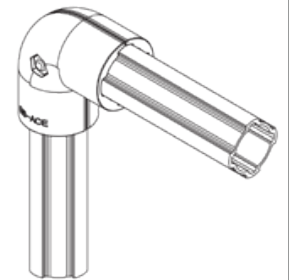
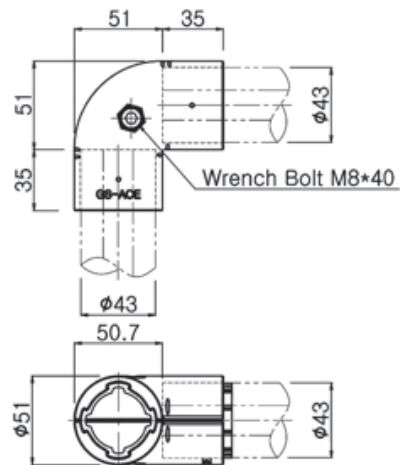


A-490 90° Elbow Joint

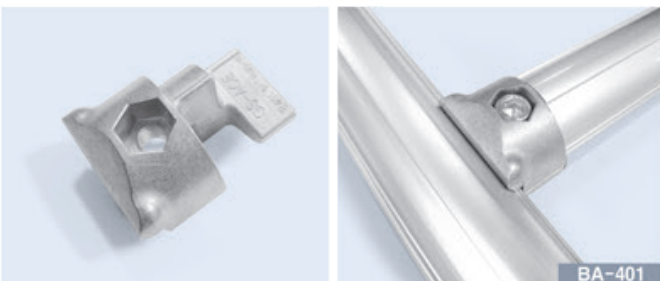


- Weight : 0.131kg
- Q'ty/Box : 30EA

- A-490 : 2pcs
- M0840/N08 : 1set
- Weight : 0.286kg
- Q'ty/Box : 15set

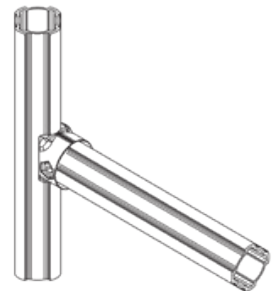
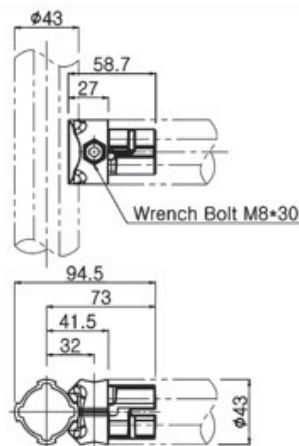


B-401 Single Tee Joint



- Weight : 0.061kg
- Q'ty/Box : Q'ty/Box : 100EA

- B-401 : 2pcs
- M0830/N08 : 1set
- Weight : 0.143kg
- Q'ty/Box : 50set

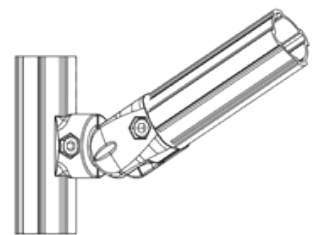
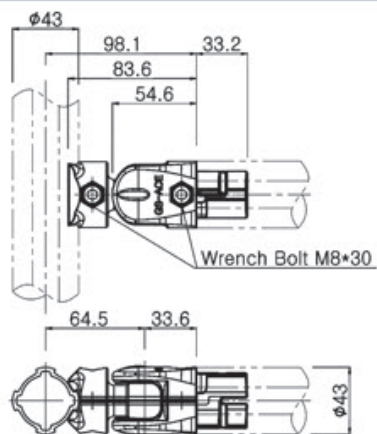


B-407A Swivel Joint (Angle Adjustable)



- Weight : 0.049kg
- Q'ty/Box : 120EA

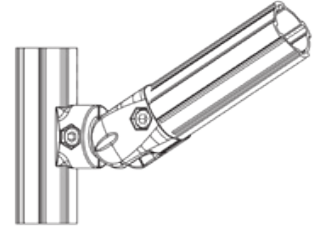
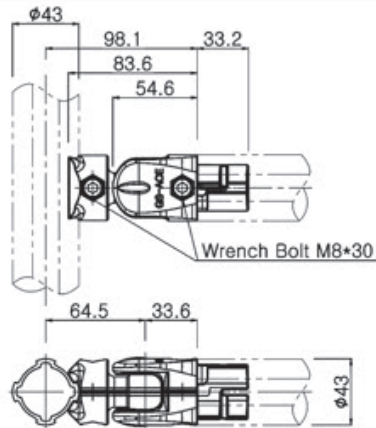
- B-407A : 2pcs, B-407B : 2pcs
- M0830/N08 : 2set
- Weight : 0.306kg
- Q'ty/Box : 20set



Unit : mm

B-407B

Swivel Joint(Angle Adjustable)

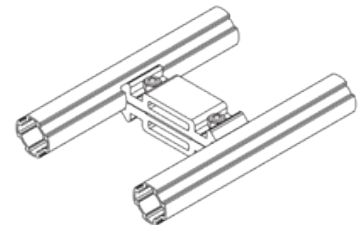
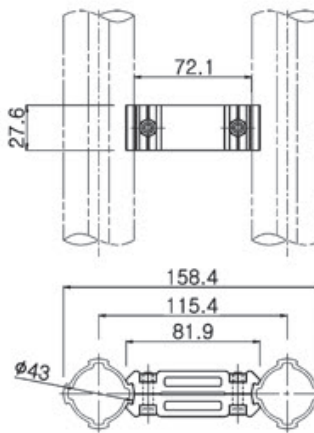
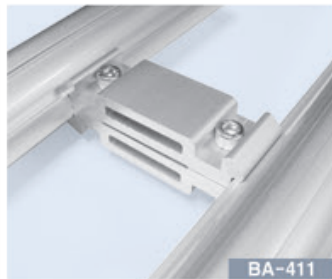
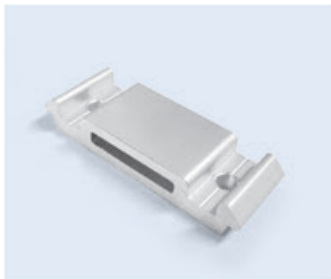


- Weight : 0.083kg
- Q'ty/Box : 60EA

- B-407A : 2pcs, B-407B : 2pcs
- M0830/N08 : 2set
- Weight : 0.306kg
- Q'ty/Box : 20set

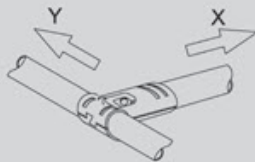
B-411

Parallel Joint



- Weight : 0.051kg
- Q'ty/Box : 100EA

- B-411 : 2pcs
- M0620/N06 : 2set
- Weight : 0.120kg
- Q'ty/Box : 50set

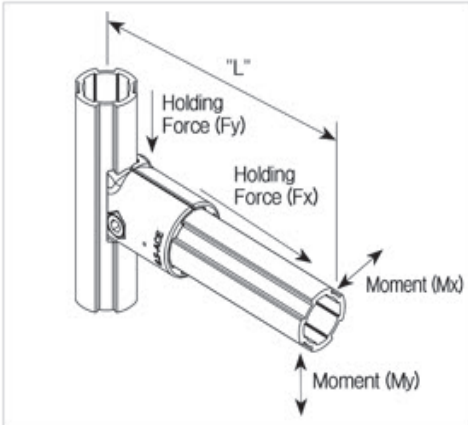


Test Condition

1. Test Speed : 5mm / min
2. Temperature : 23°C

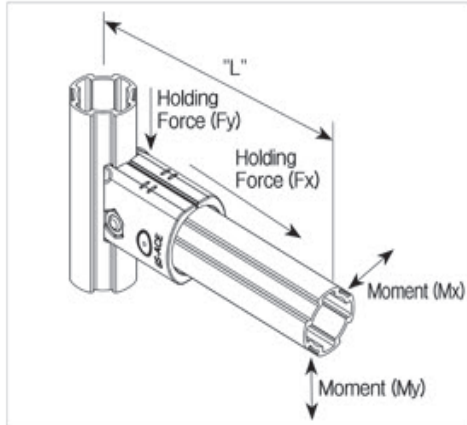
Classification	Coated Pipe		Stainless Steel Pipe	
	Ø28 x t0.7	Ø28 x t1.0	Ø28 x t0.7	Ø28 x t1.2
Direction : X	More Than 80kg	More Than 80kg	More Than 80 kg	More Than 80 kg
Direction : Y	More Than 80kg	More Than 80kg	More Than 80 kg	More Than 80 kg

A-001



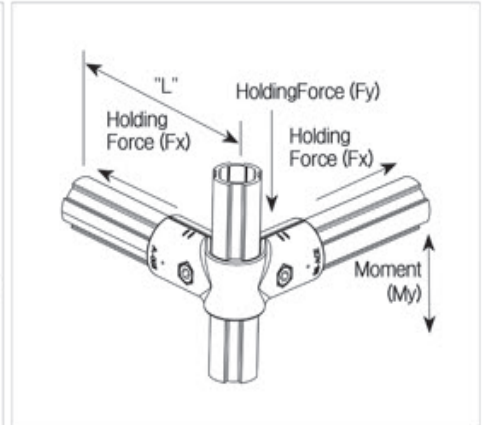
Holding Force (kgf)	F_x	80
	F_y	80
Moment (kgf) (L=110mm)	M_x	6
	M_y	12

A-001C



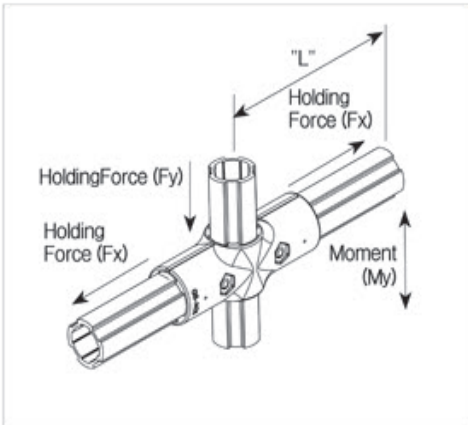
Holding Force (kgf)	F_x	80
	F_y	80
Moment (kgf) (L=110mm)	M_x	5
	M_y	10

A-003



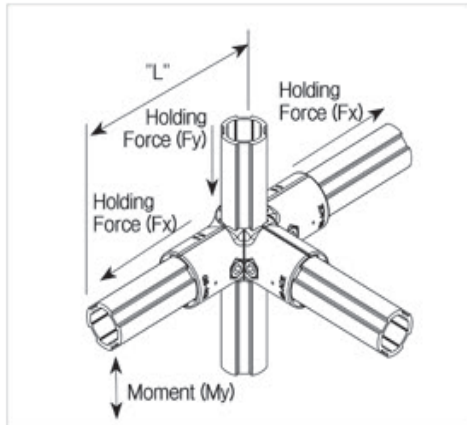
Holding Force (kgf)	F_x	80
	F_y	80
Moment (kgf) (L=110mm)	M_y	16

A-004



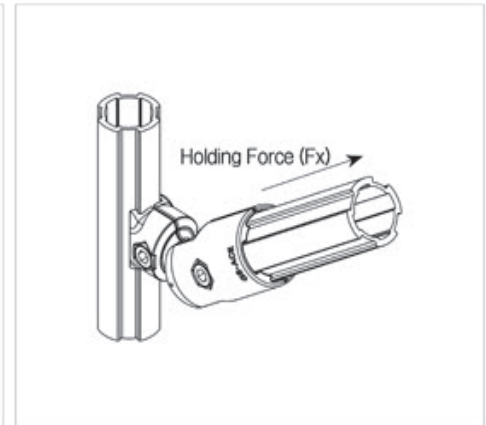
Holding Force (kgf)	F_x	80
	F_y	80
Moment (kgf) (L=110mm)	M_y	25

AA-003



Holding Force (kgf)	F_x	80
	F_y	80
Moment (kgf) (L=110mm)	M_y	19

A-007B



Holding Force (kgf)	F_x	80
---------------------	-------	----

A-007C



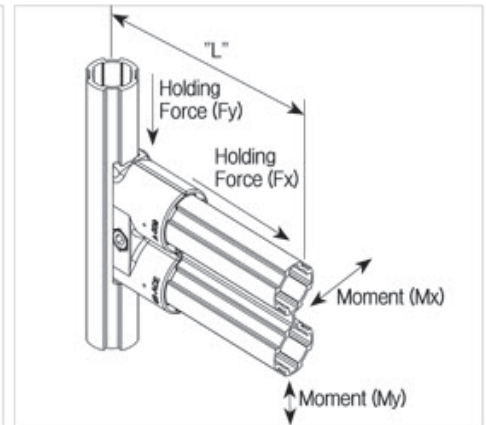
Holding Force (kgf)	F_x	80
---------------------	-------	----

A-007D



Holding Force (kgf)	F_x	80
---------------------	-------	----

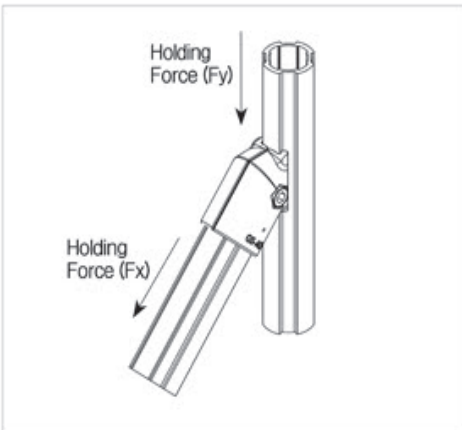
A-009



Holding Force (kgf)	F_x	150
	F_y	200
Moment (kgf) (L=110mm)	M_x	29
	M_y	56

Unit : mm

A-013



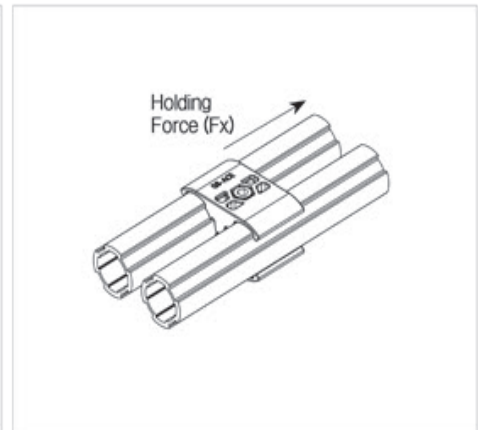
Holding Force (kgf)	Fx	80
	Fy	80

A-023



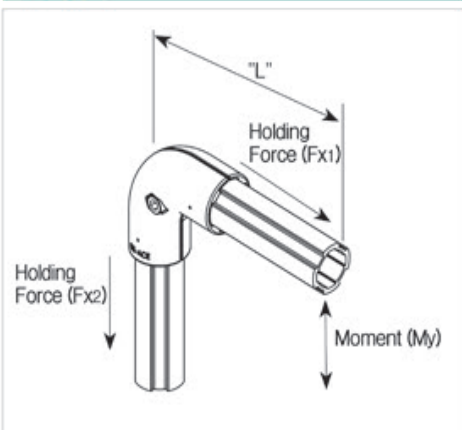
Holding Force (kgf)	Fy	80
---------------------	----	----

A-028



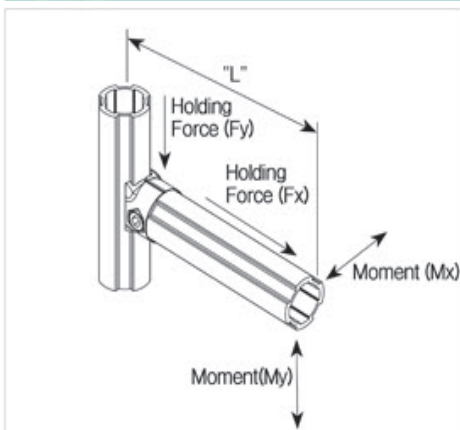
Holding Force (kgf)	Fx	80
---------------------	----	----

A-090



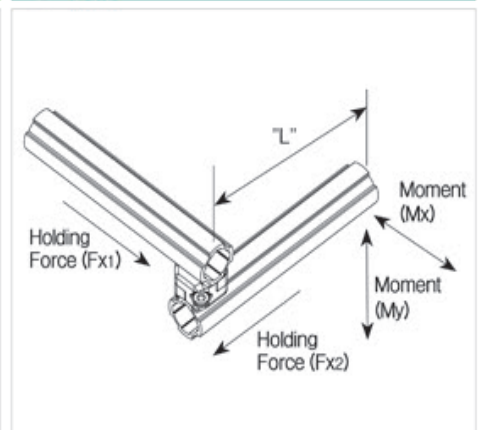
Holding Force (kgf)	Fx1	80
	Fx2	80
Moment (kgf) (L=110mm)	My	21

B-001



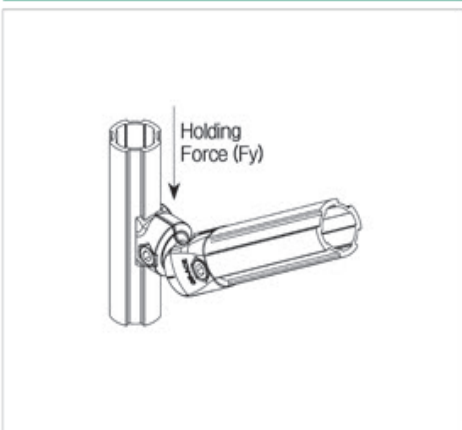
Holding Force (kgf)	Fx	50
	Fy	80
Moment (kgf) (L=110mm)	Mx	5
	My	8

B-006



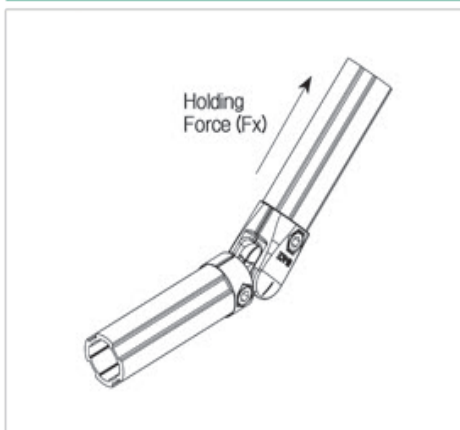
Holding Force (kgf)	Fx1	80
	Fy2	80
Moment (kgf) (L=110mm)	Mx	9
	My	6

B-007A



Holding Force (kgf)	Fy	80
---------------------	----	----

B-007B



Holding Force (kgf)	Fx	50
---------------------	----	----

B-007C



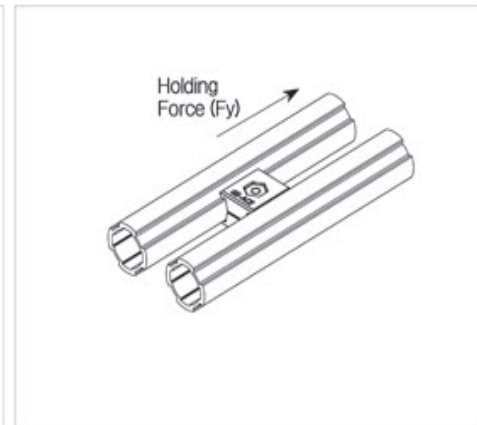
Holding Force (kgf)	Fx	50
---------------------	----	----

B-007D



Holding Force (kgf)	Fx	50
---------------------	----	----

B-008



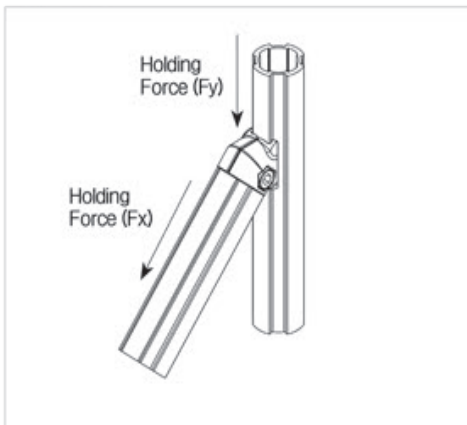
Holding Force (kgf)	Fy	80
---------------------	----	----

B-011



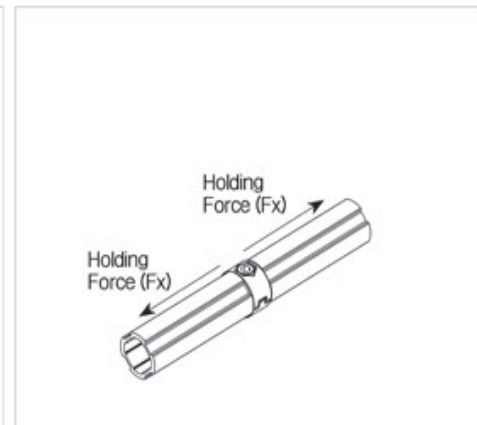
Holding Force (kgf)	Fy	80
---------------------	----	----

B-013



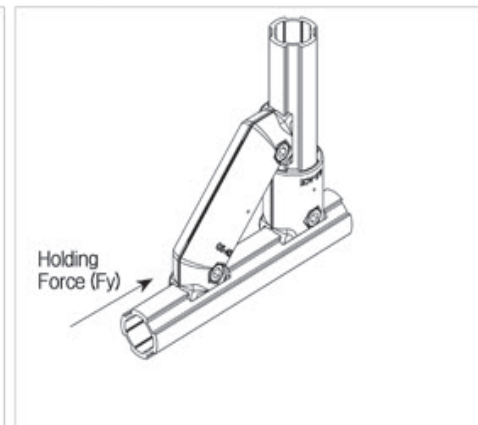
Holding Force (kgf)	Fx	50
	Fy	80

B-044



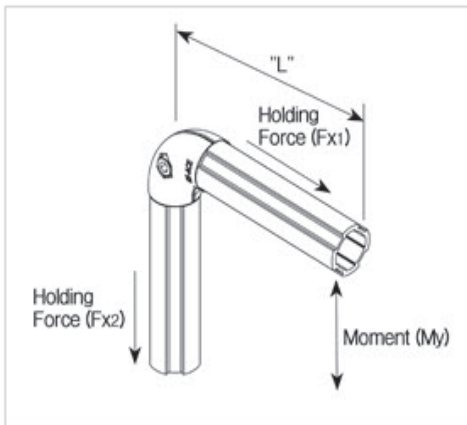
Holding Force (kgf)	Fx	80
---------------------	----	----

B-045



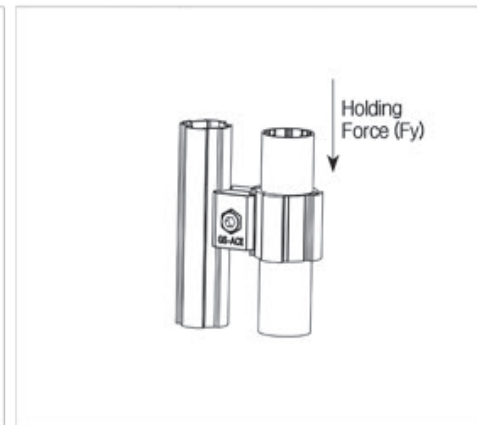
Holding Force (kgf)	Fy	150
---------------------	----	-----

B-090



Holding Force (kgf)	Fx1	50
	Fx2	50
Moment (kgf) (L=110mm)	My	13

APH-633L, APH-633R



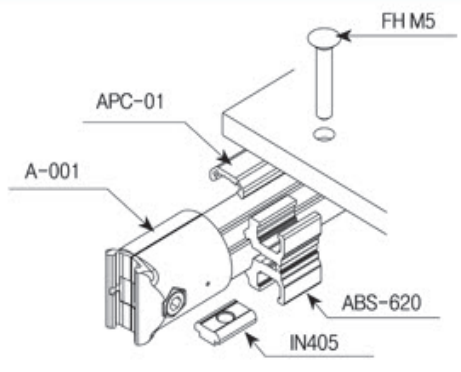
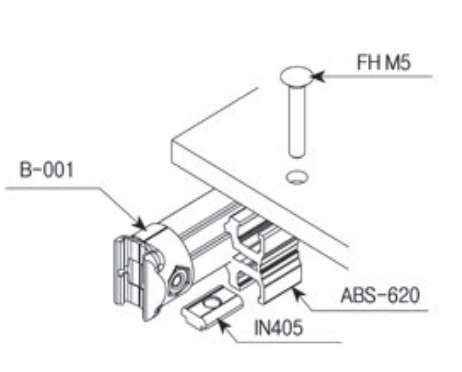
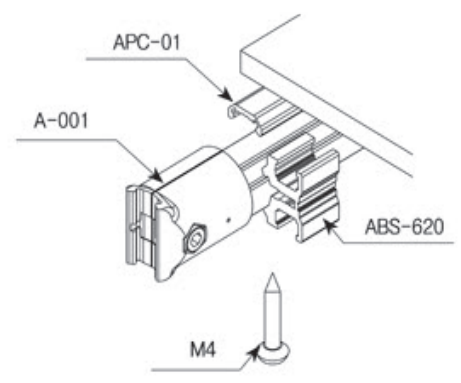
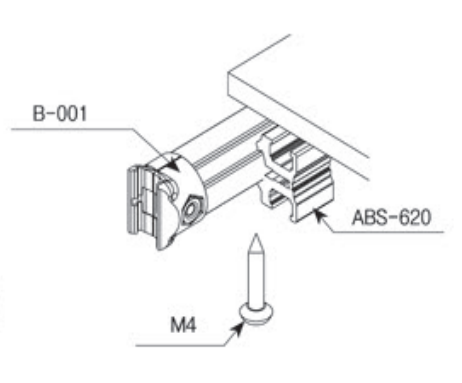
Holding Force (kgf)	Fy	80
---------------------	----	----

BA2800A/B, BP2800A/B



Holding Force (kgf)	Fx	80
---------------------	----	----

Example for ABS-620

Outer Type	Inner Type
 <p>Diagram showing the assembly of the Outer Type ABS-620 joint. Components labeled include APC-01, A-001, ABS-620, and IN405. A bolt labeled FH M5 is shown being inserted into the joint.</p>	 <p>Diagram showing the assembly of the Inner Type ABS-620 joint. Components labeled include B-001, ABS-620, and IN405. A bolt labeled FH M5 is shown being inserted into the joint.</p>
 <p>Diagram showing the assembly of the Outer Type ABS-620 joint with an M4 bolt. Components labeled include APC-01, A-001, and ABS-620. A bolt labeled M4 is shown being inserted into the joint.</p>	 <p>Diagram showing the assembly of the Inner Type ABS-620 joint with an M4 bolt. Component labeled B-001 and ABS-620. A bolt labeled M4 is shown being inserted into the joint.</p>

Example for B-017A-08

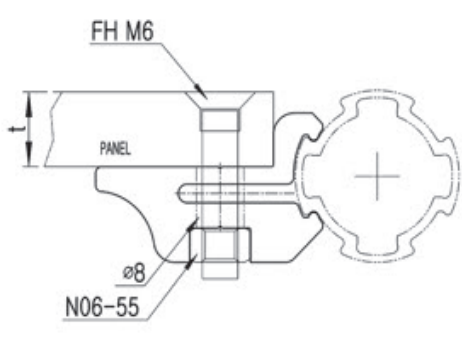


Diagram showing the cross-section of the B-017A-08 joint assembly with an FH M6 bolt. Components labeled include PANEL, N06-55, and a hole diameter of $\varnothing 8$.

T	BOLT SPEC
5mm	M6 × 20
9mm	M6 × 25
12mm	M6 × 30

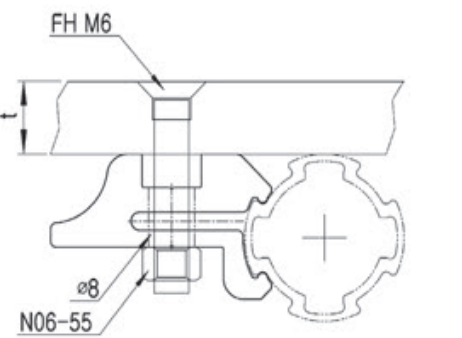


Diagram showing the cross-section of the B-017A-08 joint assembly with an FH M6 bolt. Components labeled include N06-55 and a hole diameter of $\varnothing 8$.

T	BOLT SPEC
5mm	M6 × 25
9mm	M6 × 30
12mm	M6 × 35

